

1 2 3 4 5 6 7 8

REV	LOCATIONS	DESCRIPTION	DATE	REVISER	APPD

A

B

C

D

E

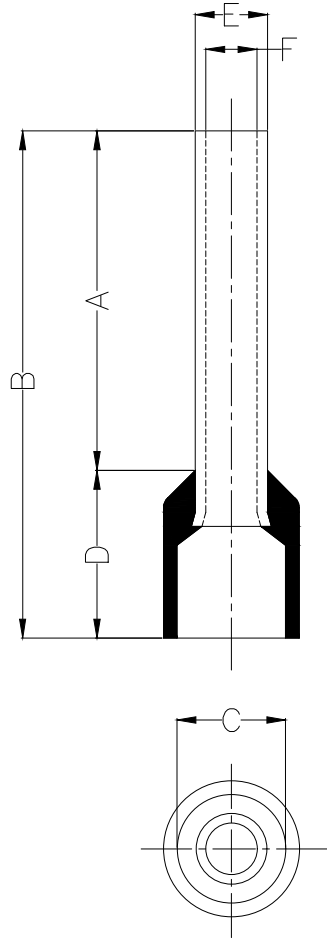
A

B

C

D

E



Notes:

Material: Copper  
 Insulator: PVC (UL 94V-0)  
 Plating: Bright tin plated  
 Maximum temperature: 75 °C  
 Maximum electrical rating: 600V  
 Wire range: 0.5mm<sup>2</sup>/ (20AWG)

Dimensions					
A	B	C	D	E	F
±1	±1	±0.5	±1	±0.5	±0.5
10.0	15.8	2.6	6.0	1.2	1.0

PART NO.	Color Of Insulator
FET02-000501000ARD8	Red
FET02-000501000ABU8	Blue
FET02-000501000ABK8	Black
FET02-000501000AWH8	White
FET02-000501000AGY8	Gray

THIRD ANGLE PROJECTION

DESIGN UNITS mm

SCALE: 5:1    SIZE: A4

GENERAL TOLERANCES (UNLESS SPECIFIED)	
X. ±0.30	X.* ±5'
X.X ±0.20	X.X' ±2'
X.XX ±0.15	X.XX' ±1'
X.XXX ±0.10	X.XXX' ±0.5'

APPROVE BY LEO	DATE 19/JAN/21
CHECKED BY GISELLE	DATE 19/JAN/21
DRAWN BY PYD	DATE 19/JAN/21

PART NO. FET02-000501000AXX8	ITEM NO. FET02
TITLE Cord end terminal	

Building Technology Cornerstone

REV 0    SHEET NO. 1/1

THIS DRAWING CONTAINS INFORMATION THAT IS PROPRIETARY TO TXGA INDUSTRIAL ELECTRONICS(S.Z)CO.,LTD AND SHOULD NOT BE USED WITHOUT WRITTEN PERMISSION

1 2 3 4 5 6 7 8

F

F